

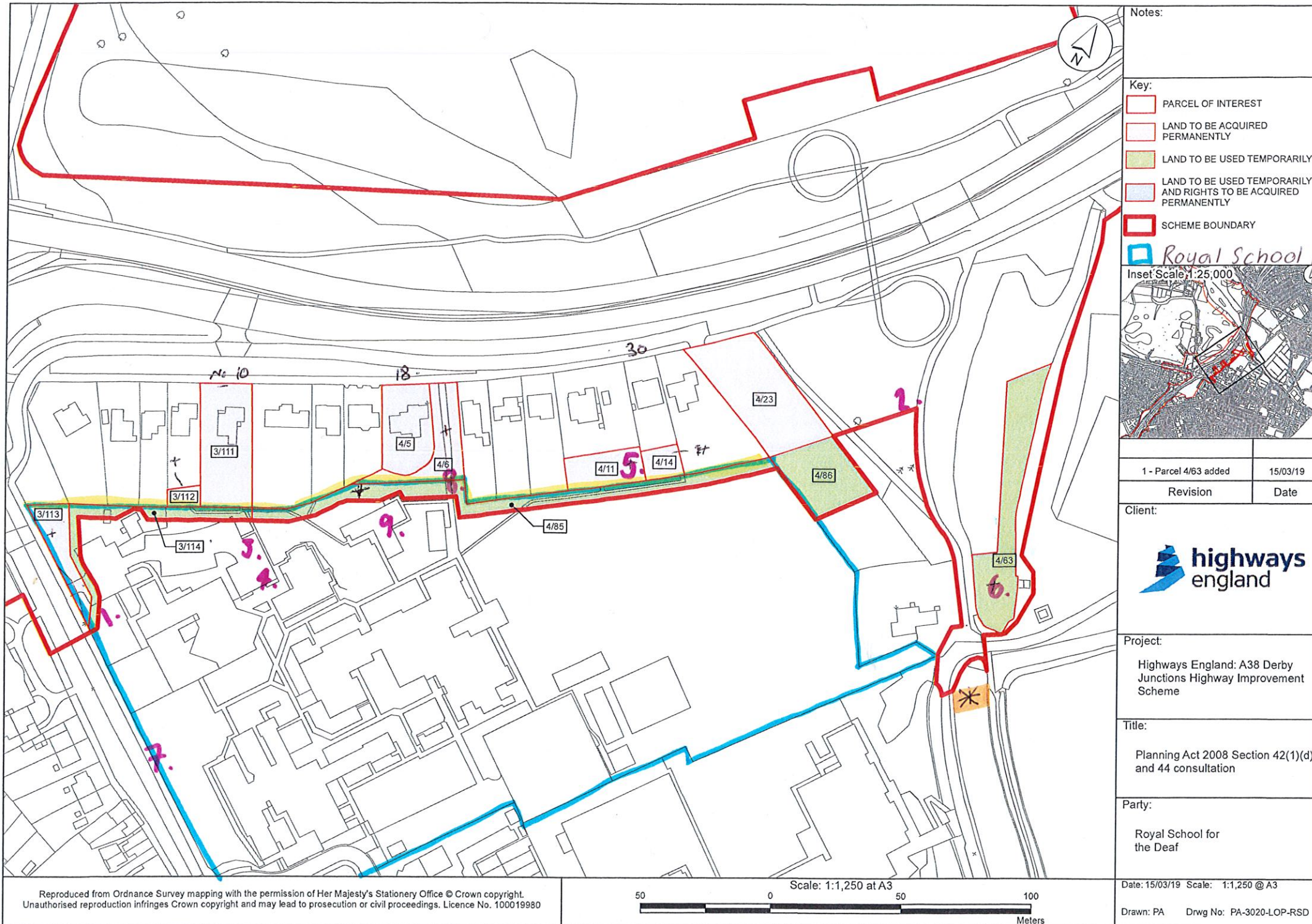
Royal School for the Deaf – Derby A38 Junction Improvements

Please find an outline of all issues that we intend to raise at in relation to this matter at the hearing.

- The erection of a noise attenuation barrier which would double as a security fence along the north western boundary of the green temporary possession land. This would ideally need to be constructed on 'day one' of the project, before the demolition of the houses. It is important that there is as little noise disruption as possible and that security can be maintained throughout the school including the integrity of the school boundary for security reasons. The barrier would be 4 meters in height and be as aesthetically pleasing as possible in keeping with the current wildlife friendly green and leafy campus so enjoyed by CYP. Proposed materials include wood, metal or plastic and a combined bund with a smaller barrier on top. There should be potential for planting, artwork and for bats to roost. In terms of the maintenance of the noise barrier, it is thought that this should fall to Highways England. The barrier should run between points 1 and 2 on the attached plan.
- There are concerns that the pond at point 6 may surcharge with the additional flow from the highways and create a maintenance liability for the Royal School for the Deaf.
- Fire hydrants and all other services to the school need to be continuous throughout the works. The switching over of major services would need to be done during school holidays to minimise inconvenience and ensure continuity of everyday activities at the school. Following the fire safety meeting at the school on 24th October 2019, it is understood that a permanent emergency vehicle parking space will be provided with a grasscrete base, shown at the point marked 3 on the attached plan. There will also be an additional fire hydrant installed at point 4 on the same plan. This will ensure emergency access is always available to the residential Lydia House (point 9).
- The school has a sensory garden which is located approximately at point 5. This will need to be relocated and reconstructed. The cost of this will need to be covered within the disturbance or equivalent reinstatement claim. The site for the new location of the garden is still being considered by the school.
- Various other facilities will need relocating including but not limited to the gas substation, water meter, bicycle shed, small luggage shed and container.
- There are concerns relating to the need for continued access to the school. Access will need to be maintained at all times barring necessary periods for tarmac laying etc. During such periods, alternative access will be needed. The alternative access should be suitable with sufficient width access gates, a sufficient deceleration lane and good visibility. Additionally, if works which impact the access could again be done during school holidays that would greatly minimise the impact on the school. It is also of merit to note that some CYP travelling to and from the school require medical interventions. It is crucial that any disruption to traffic flow is kept to an absolute minimum. Should there be any disruption, that the School has plenty of notice to make suitable arrangements. This is also true of bus routes to allow Post 16 young people to attend external providers such as Derby College.
- It will need to be ensured that the A38 can be crossed safely by pedestrians and that that the area is well lit.
- The school would like to retain the old metal Victorian gates (point 8) which lead to the current Queensway slip road. These are to be removed and retained for future use by the school.
- The School would like to maintain the current "Mundy" wall (point 7) running along its boundary with Ashbourne Road and note verbal reassurances that should this be taken down it will be restored in keeping with its former character.

- Additional signage is to be provided along the Ashbourne Road in line with the new access.
- Royal School for the Deaf Derby stakeholder meetings to address concerns specific to the school community which are accessible to Deaf people and monoglot British Sign Language users together with photomontages to ensure information is visual and can be accessed by all.
- The provision of a stakeholder liaison officer during the work to provide timely information to the School throughout the works supported by a British Sign Language Interpreter.
- Reassurance that pollution, noise and air, will not deteriorate on campus during or after the works and should it do so, adequate mitigation or compensation is agreed wherever possible in advance.

We hope that you can consider these points favourably to allow for the continued operation of the school.



Royal School for the Deaf Derby Boundary.